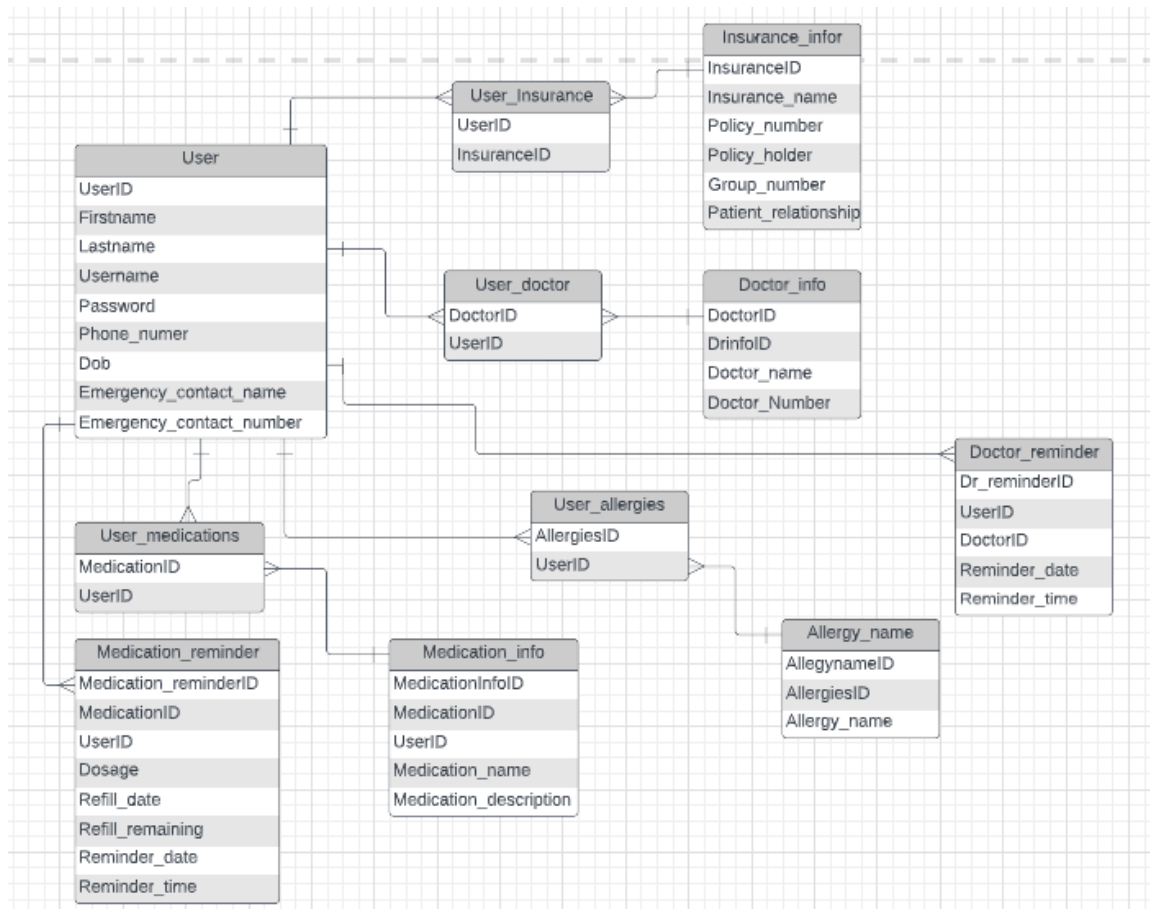


Entity Relationship Diagram



The Entity Relationship diagram demonstrates how information would be stored from the website prototype. The 'user' table contains the user's personal information from their login information to emergency contact information. Normalization is used to organize the data and to provide more flexibility as redundancy and inconsistent dependency are eliminated. The 'Insurance_infor' table contains all of a patient's insurance information, the 'Doctor_info' table contains a patients doctor information. The 'Doctor_reminder' table is where the users doctor reminders are stored. The 'allergy_name' table contains all of a patient's known allergies. The 'Medication_info' table contains a patient's current medications and the 'Medication_reminder' table is where a users medication reminders are stored.